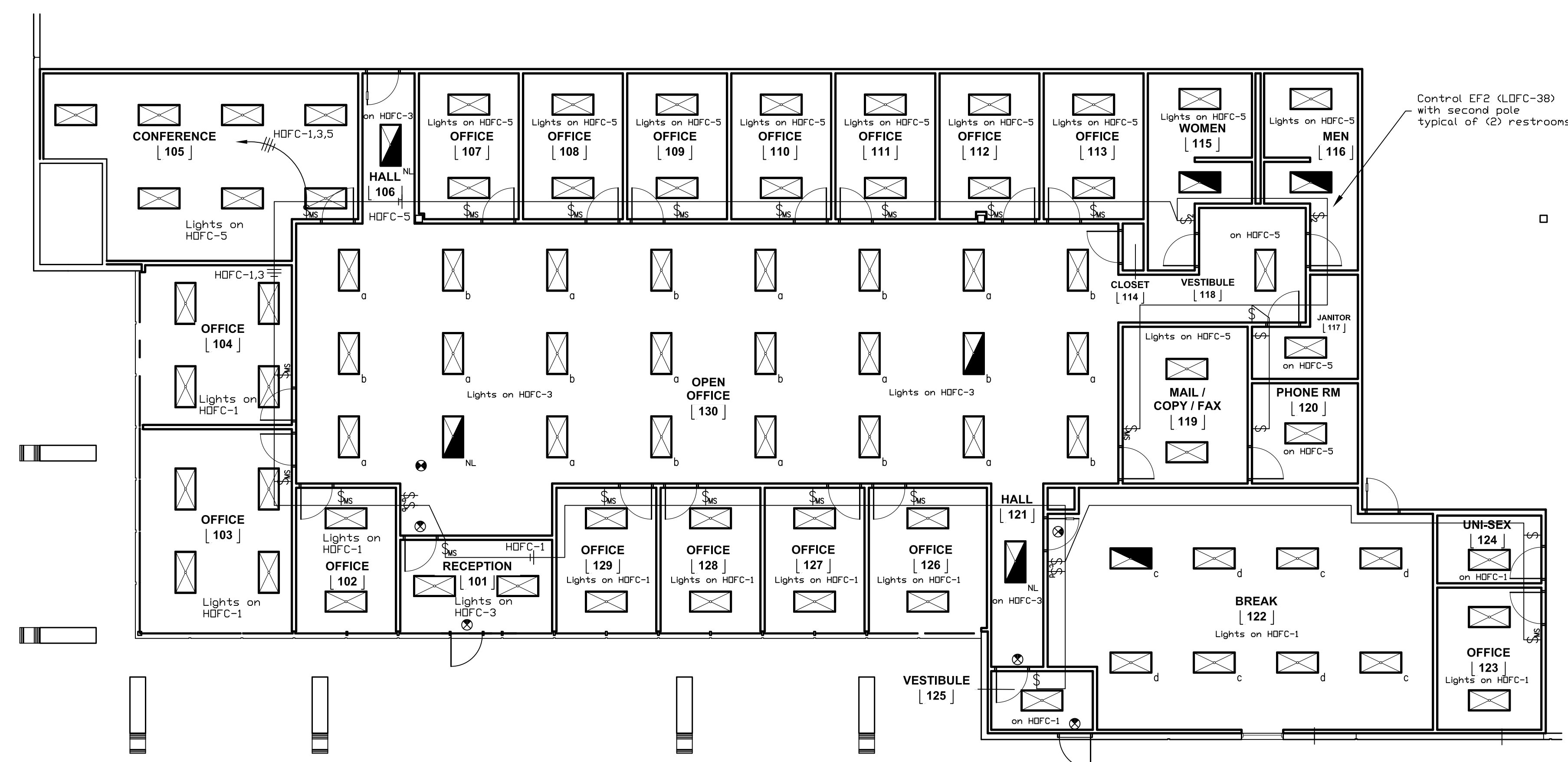


Panel Label: H-OFC		Main Type: 22 KAIC		Voltage: 277/480		Phase: 3		Section: Location: Top feed		Name: 1	
Main Bus Size: 225A				# of Spaces:						Mounting: Surface	
VA Load	A	B	C	Load Served	Trips	# of Wires	Wire Size	Wire #	Wire Size	Wire #	VA Load
2760				Office lighting	20	1	#12	1	2		
2576				Office lighting	20	1	#12	3	4		
				Office lighting	20	1	#12	5	6		
				Spare	20	1		7	8		
				Spare	20	1		9	10		
				Spare	20	1		11	12		
2687	2687			RTU-2 - 3 ton (mca 9.7)	15	3	#12	13	14	#12	3
								15	16		3961
								17	18		3961
2687	2687			RTU-3 - 3 ton (mca 9.7)	15	3	#12	19	20	#12	3
								21	22		3961
								23	24		3961
5374	2687			RTU-4 - 7.5 ton (mca 19.4)	25	3	#10	25	26		
								27	28		
								29	30		
								31	32		
								33	34		
								35	36		
								37	38		
								39	40		
								41	42		
Transformer T LOFC											9276
											9710
											9230
VA per phase											
A	B	C									
30706	30956	30660									
Amps per phase											
A	B	C									
110.9	111.8	110.7									
4.8	4.8	4.8	25% largest motor								
2.5	2.3	2.5	25% lighting								
118.2	118.9	118.0	Total amps								
volts/phase											277
Drawn By: JSM											
Double Eagle Electric											
(817) 572 - 0391											
12/11/2008											

Panel Label: L-OFC		Main Type: 10 KAIC		Voltage: 120/208		Phase: 3		Section: Location: Bottom feed		Name: 1	
Main Bus Size: 150A				# of Spaces:						Mounting: Surface	
VA Load	A	B	C	Load Served	Trips	# of Wires	Wire Size	Wire #	Wire Size	Wire #	VA Load
1440				General purpose outlets	20	1	#12	1	2	#10	1
1260				General purpose outlets	20	1	#12	3	4	#10	1
				General purpose outlets	20	1	#12	5	6	#10	1
				General purpose outlets	20	1	#12	7	8	#10	1
				General purpose outlets	20	1	#12	9	10	#10	1
				General purpose outlets	20	1	#12	11	12	#10	1
				Spare	20	1	#12	13	14	#10	1
				Spare	20	1	#12	15	16	#12	1
				Spare	20	1	#12	17	18	#12	1
				Spare	20	1	#12	19	20	#12	1
				Spare	20	1	#10	21	22	#12	1
				Spare	20	1	#10	23	24	#12	1
				Spare	20	1	#10	25	26	#12	1
				Spare	20	1	#10	27	28	#12	1
				Spare	20	1	#10	29	30	#12	1
				Spare	20	1	#10	31	32	#12	1
				Spare	20	1	#10	33	34	#12	1
				Spare	20	1	#10	35	36	#12	1
				Spare	20	1	#10	37	38	#10	1
				Spare	20	1	#10	39	40	#10	2
				Spare	20	1	#10	41	42	#10	2
W/PGFs at RTUs, EF2-1/4hp											1596
Water heater											2750
Drawn By: JSM											
Double Eagle Electric											
(817) 572 - 0391											
12/11/2008											



OFFICE LIGHTING

SCALE 1/8" = 1'



OFFICE POWER

SCALE 1/8" = 1'

ELECTRICAL LEGEND

- ⊕ Duplex
- ⊕ Quadplex
- ⊕ Duplex at 40" AFF
- S Switch
- ⊕ Occupancy sensor
- ⊕ Jbox for furniture feed
- ⊕ Phone/data

Fixture Schedule

- Fluorescent 2x4 layin - 3lamp T8 furnished with electronic ballasts, 277V
- ▣ Fluorescent 2x4 layin - Same as above with center lamp on emergency battery pack
- ⊕ Exit light

SEAL

12/9/2008

MULTI-TENANT INVENTORY AND DISTRIBUTION CENTER FOR

ARLINGTON COMMERCE CENTER

VISTAR

4905 NEW YORK AVE.
ARLINGTON, TEXAS
76018

General Contractor:
KBD CONSTRUCTION SERVICES
1431 Greenway, Suite 740
Irving, Texas 75038

Architect:
MACGREGOR ASSOCIATES
ARCHITECTS
2830 Paces Ferry Rd. NW, Suite 500
Atlanta, Georgia 30339

MULTI-TENANT INVENTORY AND DISTRIBUTION CENTER FOR

SHEET TITLE
OFFICE

SHEET NUMBER
E3